

'Apollo' Valves

SUBMITTAL SHEET

A127 Series

Pressure Reducing Automatic Control Valve



Job Name:	
Job Location:	
Engineer:	
Contractor:	
Tag:	
PO Number:	
Representative:	
Wholesale Distributor:	



DESCRIPTION

The A127 reduces a higher upstream pressure to a constant, lower downstream pressure regardless of fluctuations in supply or demand.

The normally open, spring loaded pilot, sensing downstream pressure, responds to changes in pressure and causes the main valve to do the same. The net result is a constant modulating action of the pilot and main valve to hold the downstream pressure constant. The pilot system is equipped with an opening speed control that fine tunes the valve response to the system variables. **Proudly made in the USA.**

FEATURES

- Reduces a higher inlet pressure to a lower outlet pressure
- Constant outlet pressure over wide flow range
- Pilot-operated main valve not subject to pressure fall off
- Outlet pressure is adjustable with single screw
- Can be maintained without removal from the line
- Adjustable opening/response speed
- Factory tested and can be pre-set to your requirements

SIZES

- GLOBE/ANGLE
- Screwed Ends: 1-1/4" - 3"
 - Grooved Ends: 1-1/2" - 6"
 - Flanged Ends: 1-1/4" - 24" (globe)
1-1/4" - 16" (angle)

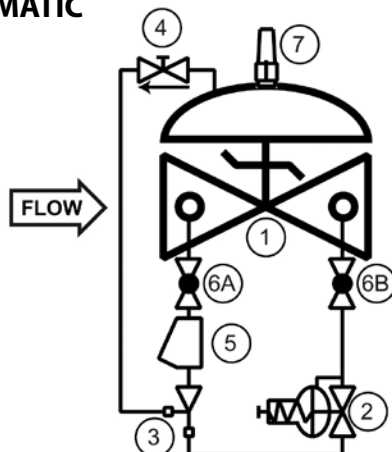
STANDARD MATERIALS LIST

Part Name	Material
Body/Bonnet	Ductile Iron (epoxy coated), Carbon Steel (epoxy coated), Stainless Steel, B61 Bronze <i>-Others available (consult factory)</i>
Seat Ring	Bronze, Stainless Steel
Stem	Stainless Steel, Monel
Spring	Stainless Steel
Diaphragm	Nylon Reinforced Buna-N, Viton, EPDM
Seat Disc	Buna-N, Viton, EPDM
Pilot	Bronze, Stainless Steel Other pilot system components: Bronze/Brass -All Stainless Steel
Tubing & Fittings	Copper/Brass, Stainless Steel

MAXIMUM PRESSURE

End Connections	Ductile Iron	Steel/SS	Bronze
Threaded	640 psi	640 psi	500 psi
Grooved	300 psi	300 psi	300 psi
150# Flanged	250 psi	285 psi	225 psi
300# Flanged	640 psi	740 psi	500 psi

SCHEMATIC



COMPONENTS (as shown on the schematic diagram)

No.	Component
1	Model 65 Basic Control Valve
2	Model 1340 Pressure Reducing Pilot
3	Model 126 Ejector (Fixed orifice pilot system supply restrictor)
4	Model 141-3* Flow Control Valve (Adjustable opening speed control) <i>*NOTE: Model 141-2 Needle Valve used on sizes 1-1/4" - 3"</i>
5	Model 159 Y-Strainer (Protects pilot system from dirt/debris)
6	Model 141-4 Isolation Ball Valves
7	Model 155 Visual Indicator (Optional)

Apollo Valves, Manufactured by **Conbraco Industries, Inc.**
701 Matthews Mint-Hill Road, Matthews, NC 28105 USA
www.apollovalves.com | (704) 841-6000

This specification is provided for reference only. Conbraco Industries Inc. reserves the right to change any portion of this specification without notice and without incurring obligation to make such changes to Conbraco products previously or subsequently sold. Please visit our website @ www.apollovalves.com for the most current information.

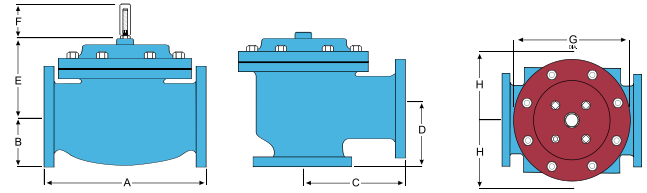


"Apollo" Valves

SUBMITTAL SHEET

A127 Series

Pressure Reducing Automatic Control Valve



DIMENSIONS - INCHES

DIM	END CONN.	1-1/4 - 1-1/2	2	2-1/2	3	4	6	8	10	12	14	16	24
A	SCREWED	8-3/4	9-7/8	10-1/2	13	--	--	--	--	--	--	--	--
	GROOVED	8-3/4	9-7/8	10-1/2	13	15-1/4	20	--	--	--	--	--	--
	150# FLGD	8-1/2	9-3/8	10-1/2	12	15	17-3/4	25-3/8	29-3/4	34	39	40-3/8	62
B	SCREWED	1-7/16	1-11/16	1-7/8	2-1/4	--	--	--	--	--	--	--	--
	GROOVED	1*	1-3/16	1-7/16	1-3/4	2-1/4	3-5/16	--	--	--	--	--	--
	150# FLGD	2-5/16 - 2-1/2	3	3-1/2	3-3/4	4-1/2	5-1/2	6-3/4	8	9-1/2	10-5/8	11-3/4	16
C	SCREWED	4-3/8	4-3/4	6	6-1/2	--	--	--	--	--	--	--	--
	GROOVED	4-3/8*	4-3/4	6	6-1/2	7-5/8	--	--	--	--	--	--	--
	150# FLGD	4-1/4	4-3/4	6	6	7-1/2	10	12-11/16	14-7/8	17	--	20-13/16	--
D	SCREWED	3-1/8	3-7/8	4	4-1/2	--	--	--	--	--	--	--	--
	GROOVED	3-1/8*	3-7/8	4	4-1/2	5-5/8	--	--	--	--	--	--	--
	150# FLGD	3	3-7/8	4	4	5-1/2	6	8	11-3/8	11	--	15-11/16	--
E	SCREWED	3-1/8	4-1/8	4-3/8	4-3/8	5-13/16	6-1/2	8-1/2	12-1/16	11-3/4	--	16-1/2	--
	GROOVED	3-1/8	4-1/8	4-3/8	4-3/8	5-13/16	6-1/2	8-1/2	12-1/16	11-3/4	--	16-1/2	--
	150# FLGD	3	3-7/8	4	4	5-1/2	6	8	11-3/8	11	--	15-11/16	--
F	ALL	6	6	7	6-1/2	8	10	11-7/8	15-3/8	17	18	19	27
G	ALL	3-7/8	3-7/8	3-7/8	3-7/8	3-7/8	3-7/8	6-3/8	6-3/8	6-3/8	6-3/8	6-3/8	8
H	ALL	6	6-3/4	7-11/16	8-3/4	11-3/4	14	21	24-1/2	28	31-1/4	34-1/2	52
		10	11	11	11	12	13	14	17	18	20	20	28-1/2

* Grooved end not available in 1-1/4".

For maximum efficiency, the OCV control valve should be mounted in a piping system so that the valve bonnet (cover) is in the top position. Other positions are acceptable but may not allow the valve to function to its fullest and safest potential. In particular, please consult the factory before installing 8" and larger valves, or any valves with a limit switch, in positions other than described. Space should be taken into consideration when mounting valves and their pilot systems.

A routine inspection & maintenance program should be established and conducted yearly by a qualified technician.

FACTORY CODE

A127	G	003	020	1	1	1	3
MODEL NUMBER	VALVE TYPE/ CONNECTION FULL PORT	SERIES EXTENSION	VALVE SIZE - FULL PORT	BODY & BONNET MATERIAL	SEAT RING MATERIAL	PILOT, FITTINGS, TUBE	ELASTOMERS
A127 = Standard	A = Angle/Flanged ANSI CLS 150 B = Angle/Flanged ANSI CLS 300 C = Angle/Threaded (1-1/4" - 3") E = Angle/Grooved Ends (1-1/2" - 4") F = Angle/Flanged CLS 300 x CLS 150 G = Globe/Flanged ANSI CLS 150 (Full & Reduced Port) H = Globe/Flanged ANSI CLS 300 (Full & Reduced Port) J = Globe/Threaded Ends (1-1/4" - 3") V = Globe/Grooved Ends (1-1/2" - 6")	002 = Pressure Reducing/ Pressure Sustaining 003 = Pressure Reducing Valve 3LF = Pressure Reducing with Low Flow Bypass 004 = Pressure Reducing and Check Valve 005 = Pressure Reducing and Surge Control 080 = Pressure Reducing and Solenoid Shut-Off	012 = 1-1/4" 015 = 1-1/2" 020 = 2" 025 = 2-1/2" 030 = 3" 040 = 4" 060 = 6" 080 = 8" 010 = 10" 120 = 12" 140 = 14" 160 = 16" 240 = 24"	1 = Ductile Iron NSF 61-Epoxy Coated 2 = Cast Steel 5 = B61 Bronze 7 = Stainless Steel	1 = Bronze B61 2 = Stainless Steel	Code Pilot Ftgs Tube 1 BZ BRS CU 8 SS SS SS 9 BZ SS SS	3 = EPDM (Standard NSF-61)

HOW TO ORDER YOUR A127 VALVE
When Ordering please provide:
Fluid to be controlled -Model Number -Size
Globe or Angle -End Connection -Body Material
Trim Material -Pilot Options -Pressure Setting or
Spring Range -Special Requirements / Installation requirements.

Apollo Valves, Manufactured by **Conbraco Industries, Inc.**
701 Matthews Mint-Hill Road, Matthews, NC 28105 USA
www.apollovalves.com | (704) 841-6000

This specification is provided for reference only. Conbraco Industries Inc. reserves the right to change any portion of this specification without notice and without incurring obligation to make such changes to Conbraco products previously or subsequently sold. Please visit our website @ www.apollovalves.com for the most current information.

